

LEGEND

- = CONCRETE MONUMENT SET
- = CONCRETE MONUMENT FOUND
- = MONUMENT LINE
- = 2466 CONTOUR LINE
- = 2462 CONTOUR LINE
- = 25 FT. SAFETY LINE
- = BUYDOWN AREAS
- LR = LAKE RESIDENTIAL
- TC = TOWN CENTER
- TR = TOWN RESIDENTIAL
- ◆ = MONUMENT TO BE SET
- ◆ = CALCULATED MONUMENT LOCATIONS THAT CANNOT BE SET
- = 1" REBAR WITH ALUMINUM CAP SET
- = 2" BRASS DISC SET

CONTOURS ARE AT 2 FT. INTERVALS REFERENCED TO THE STAFF GAUGE AT THE PENSTOCK.

DEEP CREEK LAKE SURVEY DATA

1. HORIZONTAL DATUM

HORIZONTAL DATUM = LAMBERT NAD 83 DATUM
 NAD 83 DATUM = FIELD OBSERVATION X COMBINED SCALE FACTOR
 COMBINED SCALE FACTOR = GRID SCALE FACTOR X ELEVATION SCALE FACTOR
 APPROXIMATE COMBINED SCALE FACTOR = 0.99989

2. VERTICAL DATUM

VERTICAL DATUM = LAKE DATUM
 LAKE DATUM = NAVD 88 DATUM - 1.80 FT.

SURVEY CALLS

CONC.MON.	BEARING	DISTANCE
N211-N212	N 04°12' E	740.57'
N212-N213	N 02°40' E	870.33'
N213-N214	N 19°56' W	1449.96'

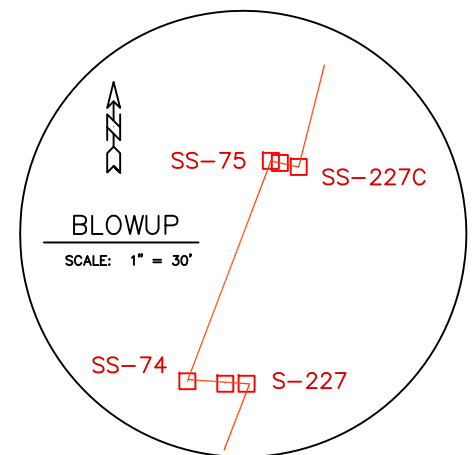
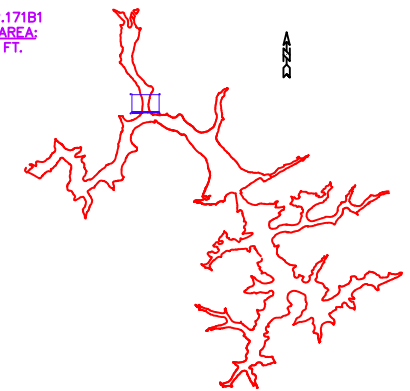
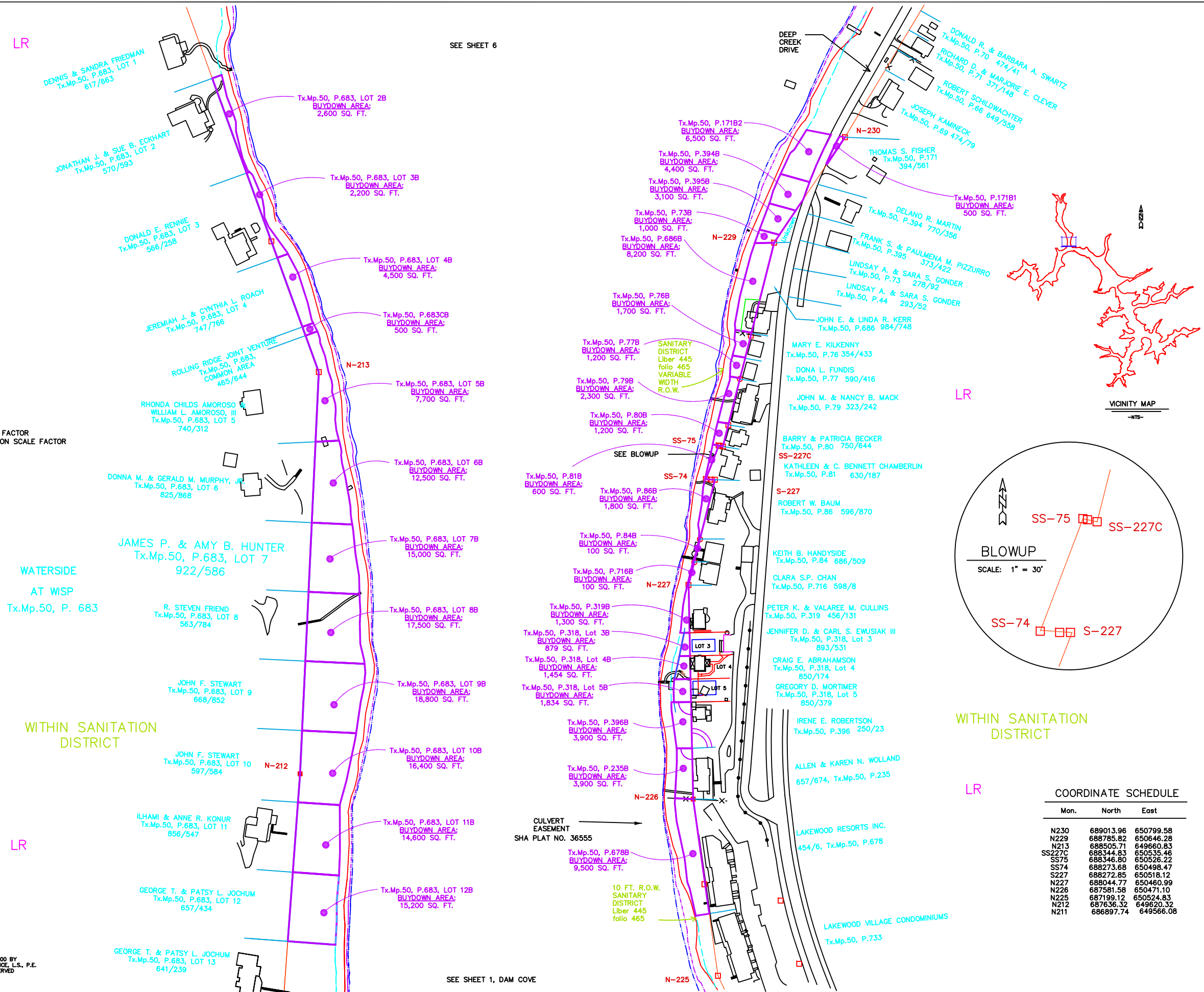
M131-N230	S 30°54' W	430.45'
N230-N229	S 33°54' W	274.87'
N229-SS227C	S 14°06' W	454.70'
SS227C-SS75	N 77°56' W	9.45'
SS75-SS74	S 20°47' W	78.02'
SS74-S227	S 87°35' E	19.66'
S227-N227	S 14°04' W	235.12'
N227-N226	S 01°15' E	463.30'
N226-N225	S 08°01' E	386.48'
N225-X314	S 33°03' E	109.34'

PENELEC CALLS

CONC.MON.NO.	BEARING	DISTANCE
N-211	N-212	N 02°00' E, 741.10 FT.
N-212	N-213	N 00°50' E, 872.60 FT.
N-213	N-214	N 21°28' W, 1448.20 FT.

N-231	N-230	S 30°01' W, 954.50 FT.
N-230	N-229	S 30°06' W, 271.60 FT.
N-229	SS-227C	S 12°26' W, 457.58 FT.
SS-227C	SS-75	N 89°57' W, 6.75 FT.
SS-75	SS-74	S 18°18' W, 73.45 FT.
SS-74	S-227	S 89°57' E, 14.00 FT.
S-227	N-227	S 12°26' W, 239.04 FT.
N-227	N-226	S 02°29' E, 453.30 FT.
N-226	N-225	S 09°39' E, 395.80 FT.
N-225	X-314	S 34°07' E, 109.40 FT.

© COPYRIGHT - 2000 BY MORGAN C. FRANCE, L.S., P.E. ALL RIGHTS RESERVED



WATERSIDE AT WSP
 Tx.Mp.50, P. 683

WITHIN SANITATION DISTRICT

WITHIN SANITATION DISTRICT

COORDINATE SCHEDULE

Mon.	North	East
N230	689013.96	650799.58
N229	688785.82	650646.28
N213	688505.71	649660.83
SS227C	688344.83	650535.46
SS75	688346.80	650526.22
SS74	688273.68	650498.47
S227	688272.85	650518.12
N227	688044.77	650460.99
N226	687581.58	650471.10
N225	687199.12	650524.83
N212	687636.32	649620.32
N211	686897.74	649566.08